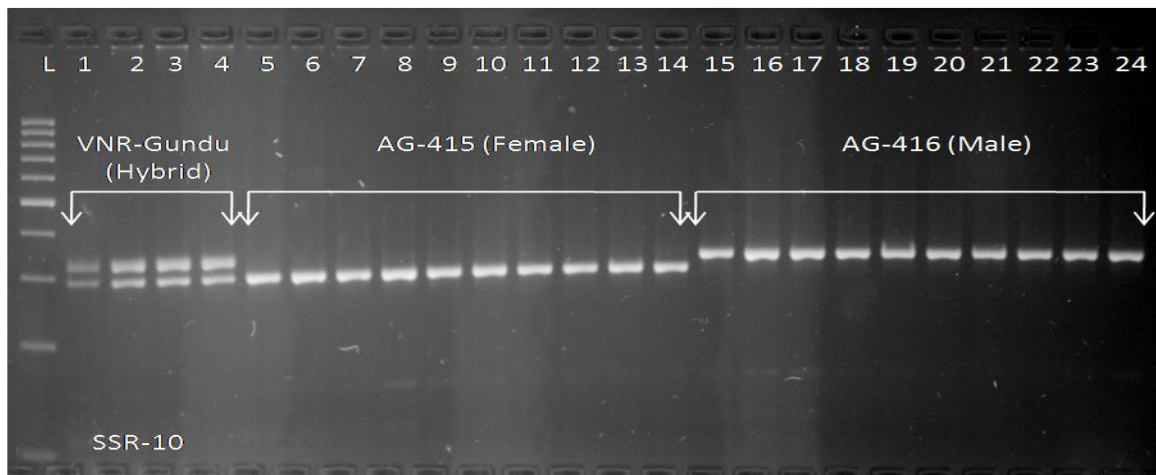


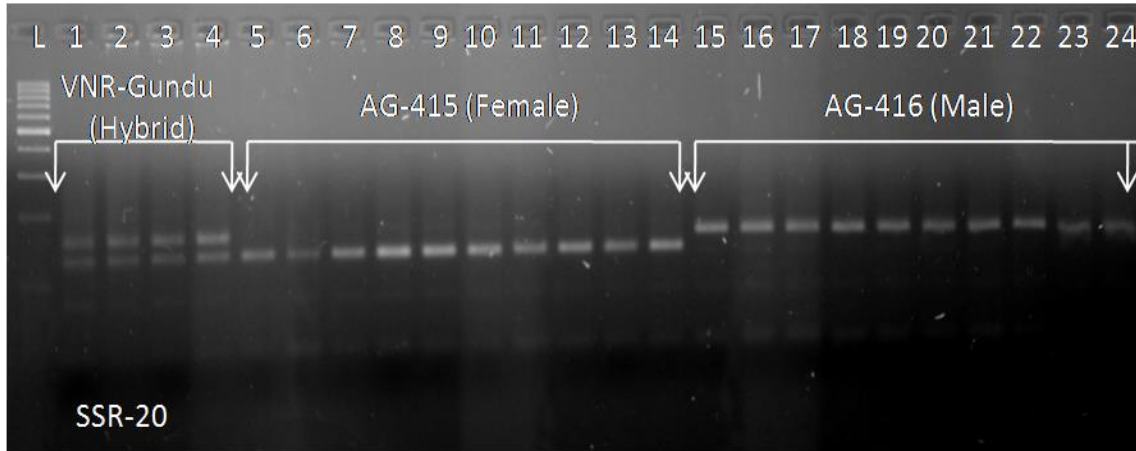
## DNA Fingerprinting & Validation VNR Gundu

Sr. No.	Marker	Base pair Size			Polymorphism	GP analysis
		Hybrid (Gundu)	Female (AG-415)	Male (AG-416)		
1	Chilli SSR-10	290, 320	290	320	√	X
2	Chilli SSR-20	140, 160	140	160	√	√
3	Chilli SSR-116	230, 240	230	240	√	√

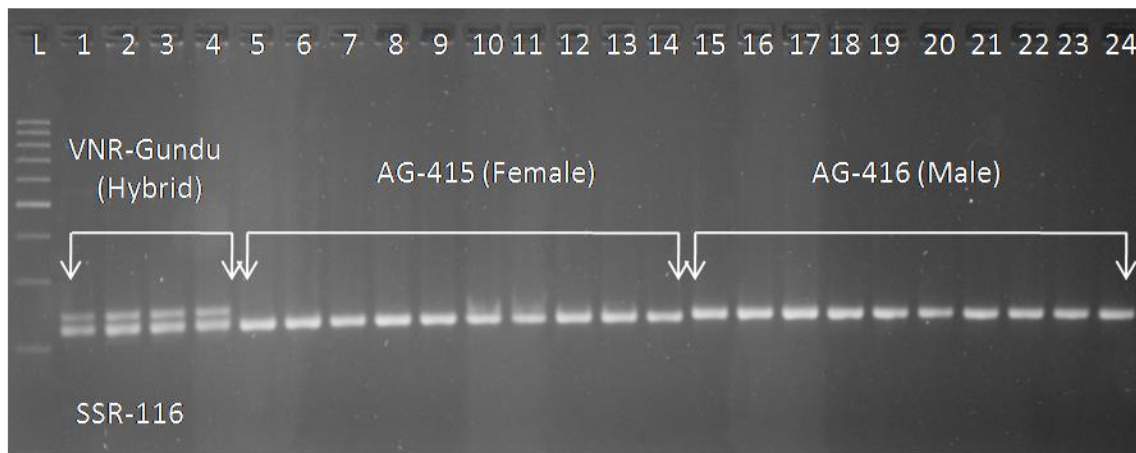
SSR-10	Forward Sequences	Reverse Sequences
Primer Sequences	ATTGTGATAGCAACCCCTGG	CACAGATGAGGGCACAATG



SSR-20	Forward Sequences	Reverse Sequences
Primer Sequences	ACGCCAAGAAAATCATCTCC	CCATTGCTGAAGAAAATGGG



SSR-116	Forward Sequences	Reverse Sequences
Primer Sequences	TTCAACATGCATCCAGCTTCTT	AAGTCATCAGCTGCAAAGACCA



## Validation of VNR Gundu

Result: SSR-10 marker did not show stable polymorphism (segregated) after validation with different lots of VNR Gundu Hybrid. In SSR-10 Marker Gundu Hybrid shown male band in some samples where as in SSR-20 & SSR-116 shown hybrid band. After analysis it is concluded that SSR-20 & SSR-116 were stable markers for GP Analysis in VNR Gundu Hybrid.

